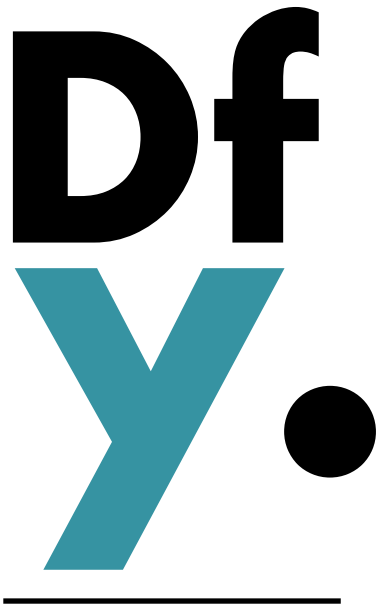


Décor

Data Sheet

Krishna - Indian Brass Rim Planter



Discovered for You.

Product description

Sharing a namesake with one of India's most powerful deities, the Krishna Indian Brass Planter brings divinity to design with its unique antique properties.

Made entirely of brass and totally hand forged, the Krishna is exclusively provided to the Australian market by Gather Co. These planters have been artificially oxidised, resulting in an eye-catching custom accent green finish.

Perfectly suited to outdoor and indoor settings, the planters are available in various sizes, depending on your application.

Hero Imagery

Krishna

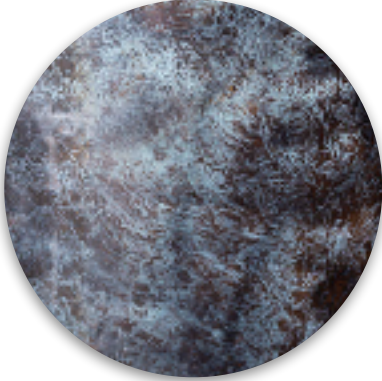


SPONGE OXIDISED BRASS

All imagery is available for free via the "Image Download" tab on each product profile. Simply visit: www.gatherco.com.au or free call: 1800 428 437 for further assistance.

Finish

Krishna



Sponge Oxidised Brass

Sizing

Krishna

*Pot Bag Size
(Ltr)*

*Weight
(kg)*

*Mouth Opening
(mm)*

Height x Width (mm)

Approximates Only.

Large

590 x 590mm

40L

10kg (Empty)

590mm

Extra Large

790 x 790mm

40L

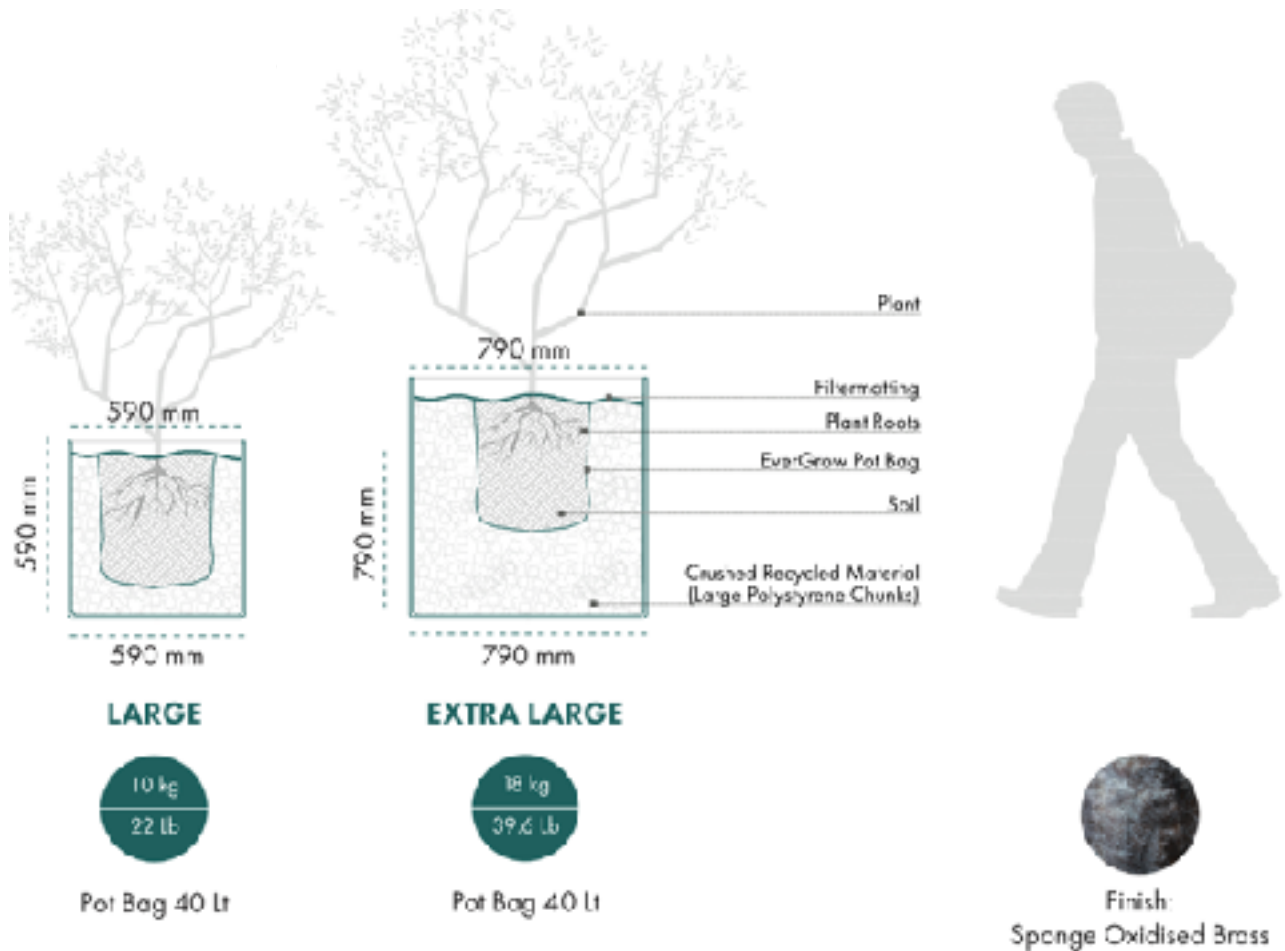
18kg (Empty)

790mm

It's important to note that the above specifications are approximates only. Being handmade, reclaimed and vintage, values will vary. Detail on installation procedures can be obtained through our downloadable "Tips for Installation" document. For any further assistance, simply visit our website:

gatherco.com.au or free call on: 1800 428 437

Krishna



Notes:

- All dimensions are approximate only.
- EverGrow Pot Bags may need to be rolled down to suit pot height.
- Installer must implement drainage outlet.



It's important to note that the above specifications are approximate only. Being handmade, reclaimed and vintage, values will vary. Detail on installation procedures can be obtained through our downloadable "Tips for Installation" document. For any further assistance, simply visit our website:

gatherco.com.au or free call on: 1800 428 437

Tips For Installation

Considerations

When selecting any product within the Gather Co collection, consideration must be given to ensure each product is suitable for the intended application.

Gather Co is pleased to provide the following advice and tips in addition to the product sale. In almost all cases, we recommend following the advice of qualified, professional and experienced installers. These tips are to be used in conjunction with the relevant Australian Standards including AS3958.1 & 2 and all corresponding manufacturers instructions.

Our chosen brands are:

Pot bags:

EverGrow New Zealand: +64 272 778 408

evergroworchard.nz

Deciding on a selection from our Metal Décor range must include the following considerations:

- Drainage
- Plant Species
- EverGrow Pot Bags
- Seepage &
- Product Variation

Drainage

Certain pieces within the Gather Co Metal Planter collection do not come with drainage holes. Where this is the case, it's the installers responsibility to drill the necessary opening if required. Ensure this task is undertaken by a qualified trade professional. We suggest using a battery-operated drill with an appropriate metal bit.

Rotate slowly and DO NOT use the hammer function. The planter's structural integrity may be compromised if this procedure is not followed correctly.

Stability & Positioning

Surfaces hosting Metal Planters must be appropriate. It is essential to ensure that the intended site is level, accessible, durable and rated to support the significant weight associated with both empty and planted-out pieces.

Exposure to various elements including wind must be accounted for, as this can cause toppling. Pedestrian thoroughfares, domestic animals and children may also present potential triggers for toppling.

Plant Species

Metal planters have a common tendency to attract and retain heat. This often results in the accelerated dissipation of soil moisture. In accordance with advice from a qualified horticulturalist or

landscape professional, we suggest selecting plant varieties well suited to arid environments.

EverGrow Pot Bags

Gather Co has partnered with EverGrow New Zealand to develop a range of purpose-built Pot Bags. These synthetic vessels are specifically designed to restrict and restrain growing roots. This in turn helps to reduce root damage caused by exposure to radiant heat. We highly recommend the application of EverGrow Pot Bags whenever planting-out any of Gather Co's Metal Planters. Please refer to the EverGrow Pot Bag "Tips for Installation" for further direction on the correct use of this accessory.

Seepage

Oxidisation and natural corrosion can occur, causing installed Metal Planters to produce seepage. This may result in discolouration to surrounding surfaces. Gather Co takes no responsibility for stains generated as a result of this natural discharge. Practical steps must be taken to manage or accept the inevitable effects of runoff which, is exaggerated over time as plants are watered, or the piece is exposed to rain/moisture.

Product Variation

Our Metal Planter collection is entirely handmade. Please expect considerable variation in size, shape, texture, colour and finish. This variation has been accounted for during the design process and Gather Co believes that it is precisely this unique character that gives each piece its authentic appeal.

We have attempted to group products according to aligning characteristics but, it must be understood that this is a guide only. Please request further detail when making selections to ensure your expectations are met.

This document was produced for the exclusive use of Gather Co Australia's domestic wholesale partners. It is not to be distributed or reproduced without the expressed written permission of Gather Co Australia. All details are thought to be correct but, may vary due to the organic, handmade, reclaimed and/or antique nature of the collection.



Gather Co
SURFACES & DECOR

GATHERCO.COM.AU | 1800 428 437