

MAMAGREEN METAL FRAMES

INTEGRAL DESIGN

MAMAGREEN furniture pieces are, for the most part, designed around a strong, durable metal structure. Made to perform well, our metal frames come in different textures and colors that withstand the challenges of commercial and residential use.

ALUMINUM

Rigid, yet light weight, alloy 6063 aluminum is a sturdy metal, very well suited for outdoor furniture, with structural anti-rust capacities. Powder coating protects against surface corrosion. Applying electrostatically charged dry paint, baked in an oven, the paint becomes a protective layer with a uniform color and texture.

Powder coated frames can be easily cleaned with a soft brush and soapy water. To handle the occasional scratch mark, we provide touch up kits in a similar color.

STAINLESS STEEL

Unmatched in strength and beauty, stainless steel frames are extremely suitable for most outdoor environments.

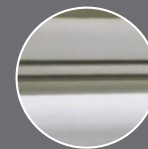
We generally use 304 stainless steel, an iron alloy with a high corrosion resistance, thanks to its unique chrome addition and nickel content, in a hairline finish, with subtle continuous, uni-directional grind marks. This finish will last well, when regularly cleaned, however, susceptible to tea staining is not advised in a marine environment, exposed to chlorinated or salt water.

A number of our collections are available with powder coated 304 stainless steel frames. This finish will perform very well - also in a coastal environment - protected by a UV resistant, durable, low maintenance powder coating on top of a strong epoxy primer.

Marine grade 316 stainless steel in a shiny mirror look finish is used in the ALBATROSS Collection, and available for custom projects, such as beach front properties or cruise ships.



304 HAIRLINE FINISH



316 MIRROR POLISHED

GALVANIZED STEEL

Powdercoated Galvanized Steel, protected with a zinc layer, has high corrosion resistance. Furniture made with a galvanized steel frame is very sturdy, and suitable for windy areas such as rooftops, but not advised for beachfront properties.

The industrial production process creates a random textured surface which is part of the design.

PREMIUM POWDER COATING COLORS

ULTRA DURABLE

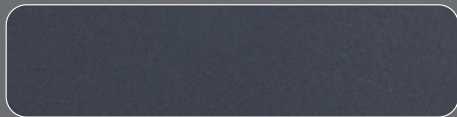
Application : All Mamagreen metal frames
Note : Contract and Residential Use



NEW
F69
CHAMPAGNE



F50
COTTON



F49
IRON BLACK

VINTAGE METALS

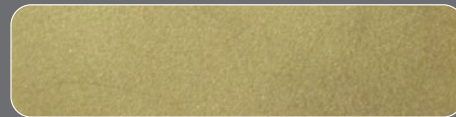
Application : Round Tubular Aluminum / Galvanized Steel
Note : Intentional Imperfections



NEW
F65
NEO BRONZE
(hammered)



F42
NEO COPPER



F41
NEO BRASS

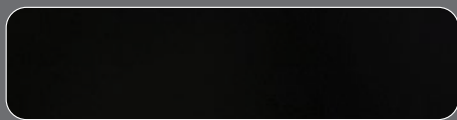
STANDARD POWDER COATING COLORS

GLOSS

Application : All Mamagreen metal frames
Note : Not advised for marine environments



F35
URBAN WHITE



F04
INK BLACK



F15
FIRE ENGINE RED



F16
INDUSTRIAL YELLOW



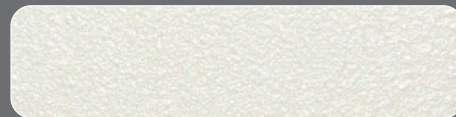
F59
AZURE



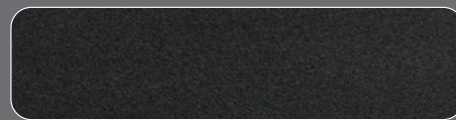
F51
ORANGE CORAL

SAND

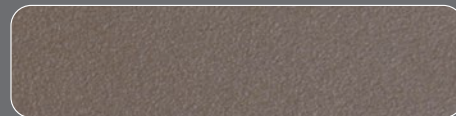
Application : Aluminum / Stainless Steel / Galvanized Steel
Note : Not advised for table tops / sandy areas / cabanas
Residential only



F03
WHITE



F05
BLACK



F07
TAUPE



F09
ANTHRACITE