

WICKER | FLAT WEAVE

Our design team created five distinct color patterns for the Daisy Mae range. Mix and match with our powder coating and textile colors, create a look that blends in or stands out.

MAMAGREEN's wicker, made from high density polyethylene, is highly color fast and extremely weather resistant (suitable both in tropical and cold environments).

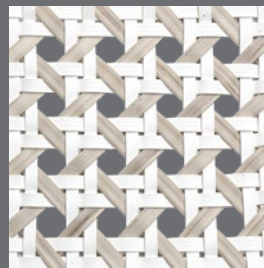
Carefully handwoven, wicker furniture pieces are durable, non-toxic, recyclable and easy to clean with liquid soap.



W27 BREEZE 



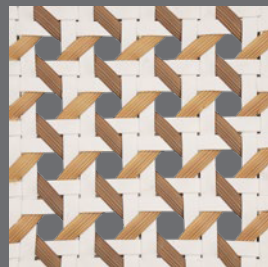
W28 FROST BLUE 



W35 ALABASTER 



W26 JAVA



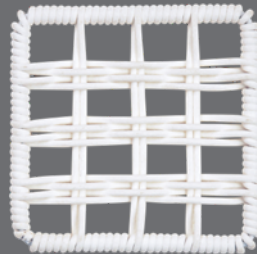
W25 MACCHIATO



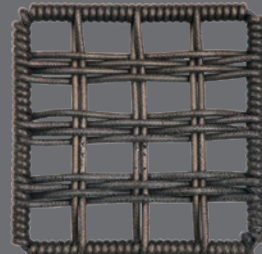
FIRE RETARDANT
IMO Res. A. 652(16) compliant

SYNTHETIC WICKER

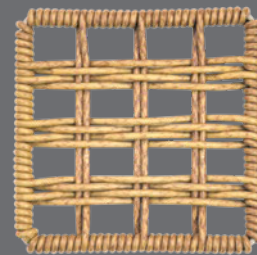
MAMAGREEN's wicker is made from high density polyethylene and is extremely weather resistant, suitable both in tropical and cold environments. Carefully handwoven, wicker furniture pieces are durable, non-toxic, recyclable and easy to clean with liquid soap.



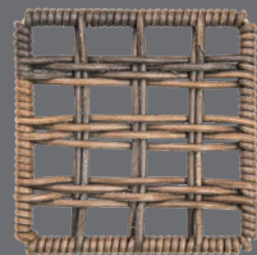
W13 SNOW WHITE



W09 AMAZON



W10 HONEY



W14 PEPPER

Rope

ROPE

MAMAGREEN's rope is made of olefin, an Oeko-Tex certified synthetic fabric and has high weatherability and anti-mildew capacities. Colors can weather slightly yet remain vibrant for an extended period of time. Ideal to clean stains and spills as soon as possible with a dry cloth. Regular cleaning with soapy lukewarm water, will extend the good looks of the furniture pieces.



W36 BARLEY
NEW



W33 RAVEN



W22 TRUFFLE



W20 WILLOW



W24 CORAL



W34 CANARY



W32 PEARL



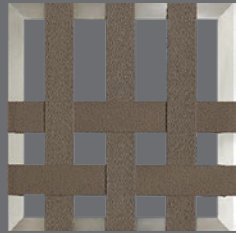
W23 NAVY

KEOPS® Webbing

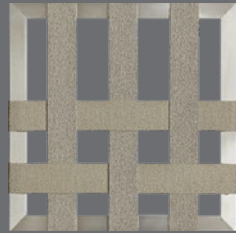
Made in France by Serge Ferrari

Blended with natural hemp fiber, a supremely comfortable, high end option for webbing. Cleaning can be done using the Serge Ferrari 500 Cleaner (or a similar PH neutral textile detergent).

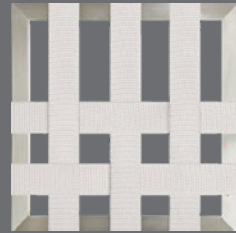
Applications :
Albatross, Ekka



W12 COCOA



W11 DUNE



W21 HERON WHITE

