

The logo for 'accento' features a stylized, dark grey graphic element resembling a pen nib or a sharp, curved stroke that points towards the letter 'a'. This graphic is positioned to the left of the word 'accento', which is written in a bold, lowercase, sans-serif typeface.



**802**

**customs code**  
54079300

**features**  
52% polypropylene, 48% polyester

**width**  
cm ± 140

**weight**  
± 210 g/m<sup>2</sup>

**dyeing**  
solution dyed product

**roll length**  
approx. 35 lm.

**abrasion resistance**  
40.000 rubs, ISO 12947-2

**color fastness to light**  
4/5, ISO 105 B02

**fastness to rubbing**  
dry 4/5, wet 4, ISO 105 X12

**seam slippage**  
warp 2 mm, weft 2 mm, ISO 13936-2

**pilling**  
4/5, ISO 12945-2

**fire resistance**  
11M - UNI 9175  
EN 1021:14 part 1/2  
BS 5852:79 part 1, is 1 (with treatment, min. 200 lm)  
California TB 117:2013  
IMO MED - Ftp 307 part 8  
IMO MED - Ftp 307 part 7

**attention**  
slight colour differences between different batches are allowed



A soft feel - this is the distinctive trait of Caliente; a polypropylene chain interwoven with a polyester chenille. It has a denim shot effect and a delicate, warm look in 26 different colours.



100



400



405



801



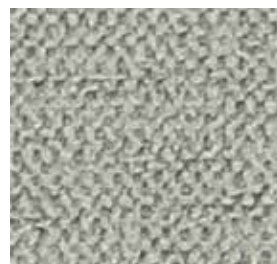
602



800



703



605



802



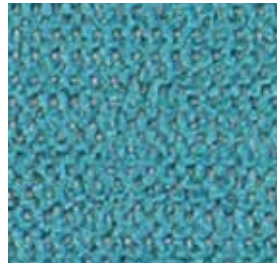
901



911



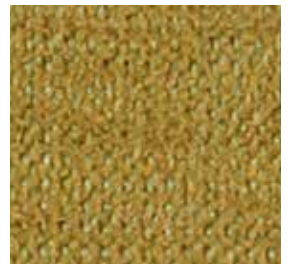
001



701



603



804



309



003



700



600



500



900



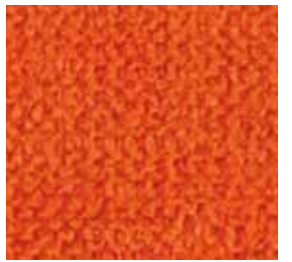
002



702



200



307



705



802

**customs code**  
54072011

**features**  
100% polypropylene

**width**  
cm ± 140

**weight**  
± 228 g/m<sup>2</sup>

**dyeing**  
solution dyed product

**roll length**  
approx. 35 lm.

**abrasion resistance**  
> 100.000 rubs, ISO 12947-2

**color fastness to light**  
5/6, ISO 105 B02

**fastness to rubbing**  
dry 5, wet 4/5, ISO 105 X12

**seam slippage**  
warp 3 mm, weft 4 mm, ISO 13936-2

**pilling**  
5, ISO 12945-2

**fire resistance**  
11M - UNI 9175  
EN 1021:14 part 1/2  
BS 5852:06 crib 5  
California TB 117:2013  
IMO MED - Ftp 307 part 8

**attention**  
slight colour differences between different batches are allowed we assume no responsibility for the transfer of colour/pigment caused by clothing and accessories

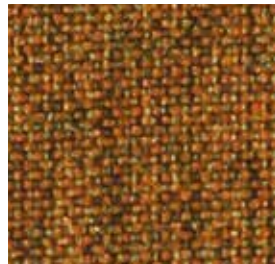
A soft feel - this is the distinctive trait of Caliente; a polypropylene chain interwoven with a polyester chenille. It has a denim shot effect and a delicate, warm look in 26 different colours.



54 / 400



46 / 500



14 / 501



55 / 701



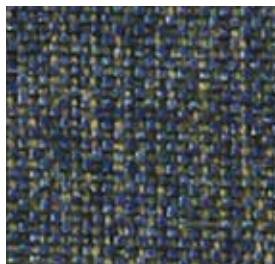
53 / 401



41 / 502



30 / 307



39 / 700



50 / 402



09 / 800



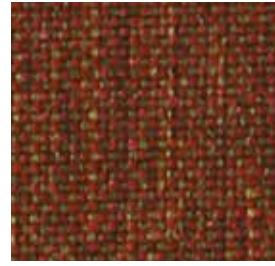
35 / 305



45 / 404



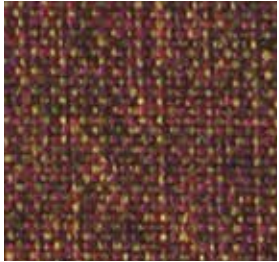
43 / 302



36 / 300



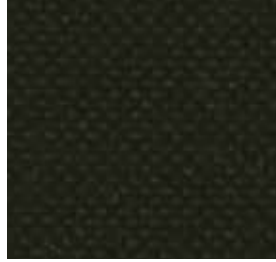
20 / 405



38 / 002



56 / 201



57 / 200



006

**customs code**

59031090

**features**

88% pvc - 7% polyester - 4% cotton  
- 1% polyurethane/polycarbonate

**width**

cm ± 140

**weight**

± 715 g/m<sup>2</sup>

**thickness**

± 1,10 mm

**roll length**

approx. 30 lm.

**abrasion resistance**

> 200.000 rubs, ISO 5470-2

**tensile strength**

warp 25 N/5 cm, weft 15 N/5 cm,  
ISO 1421

**sustainability**

phthalate free

**fire resistance**

11M - UNI 9175  
EN 1021 1/2  
BS 5852 part 1  
California TB 117-2013  
IMO FTP Code 307 part 8  
ÖNOM B 3825 - schwer brennbar.

**only on request**

BS 5852 crib 5  
DIN 4102 B1  
NF P 92 507 M1

**attention**

slight colour differences between  
different batches are allowed, we  
assume no responsibility for the  
transfer of colour/pigment caused  
by clothing and accessories

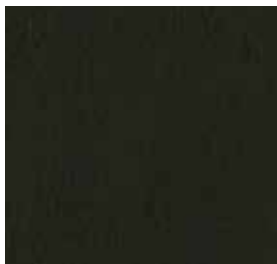
A product with hundreds of qualities: excellent cleanability, antimicrobial and antibacterial, stretchy, non-toxic, excellent scratch and tear-resistance, fire-retardant, phthalate-free, made in Italy and comes in 62 different colours.



fireproof



fire-retardant



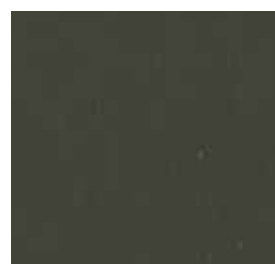
200



405



403



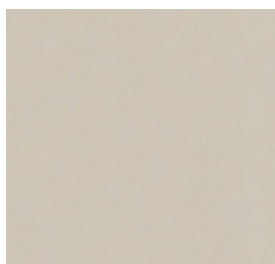
602



606



601



604



607



401



603



400



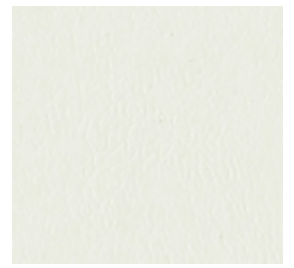
600



105



406



111



100



310



307



708



404



500



801



407



503



800



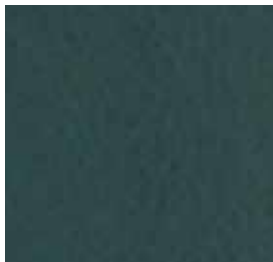
102



501



808



805



103



804



803



806



101



506



802



807



313



700



002



004



301



701



003



900



302



707



702



902



304



706



703



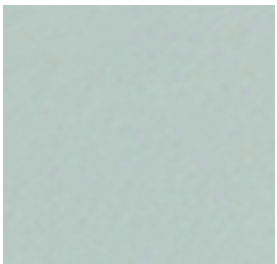
006



300



001



810



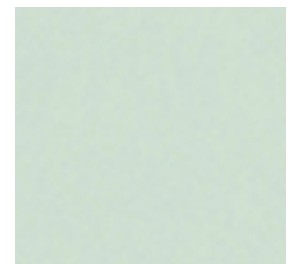
901



315



704

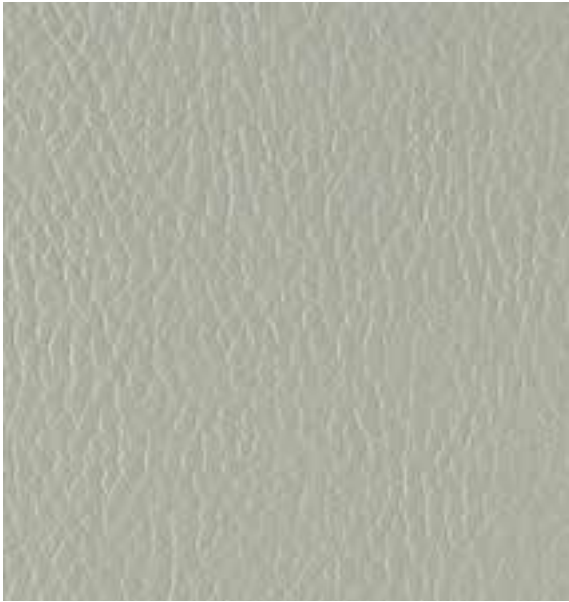


809



005





600

**customs code**  
59039099

**features**  
88% pvc - 6% polyester - 6% cotton

**width**  
cm ± 140

**weight**  
± 650 g/m<sup>2</sup>

**thickness**  
± 0,95 mm

**roll length**  
approx. 30 lm.

**abrasion resistance**  
> 100.000 rubs, ISO 5470-2

**color fastness to light**  
7, ISO 105 B02

**fastness to rubbing**  
dry 4, wet 4, ISO 105 X12.

**tensile strength**  
warp > 300 N/5 cm, weft > 200 N/5 cm, ISO 1421

**sustainability**  
phtalete free

**fire resistance**  
11M - UNI 9175  
EN 1021:14 part 1/2  
BS 5852:06 part 1, is 1  
NF-P 92 503 - M2  
California TB 117:2013  
IMO MED - Ftp 307 part 8  
ÖNOM B 3825 - schwer brennbar.

**only on request**  
BS 5852 crib 5

**attention**  
slight colour differences between different batches are allowed, we assume no responsibility for the transfer of colour/pigment caused by clothing and accessories

Inca, a fire-retardant and resistant imitation leather that is suitable for any contract use as it is stretchy and pleasant to the touch. It comes in a range of 70 different colours.



fireproof



imo-med



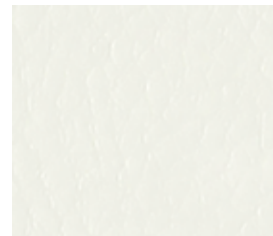
10



603



414



100



42



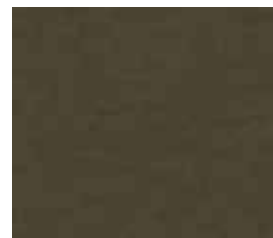
33



411



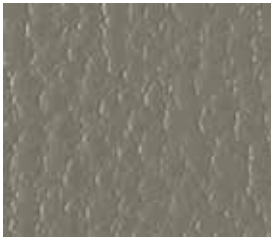
602



419



06



601



405



44



31



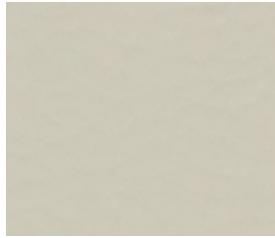
608



02



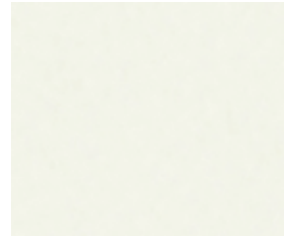
600



606



56



01



604



55



101



08



502



413



13



46



80



400



504



303



17



04



12



15



301



412



03



415



19



408



103



416



11



22



801



800



37



21



807



50



700



26



806



51



35



900



803



701



20



27



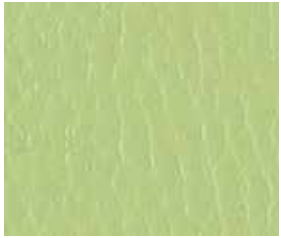
45



706



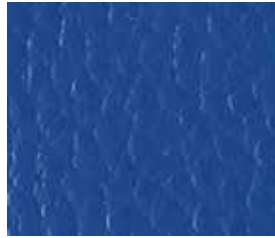
901



25



703



36



807

**Composizione**

65% Lana  
15% Alpaca  
20% Poliammide

**Altezza**

Ca. 142 cm

**Peso**

420 g/m<sup>2</sup> (+/- 5%)

**Resistenza all'abrasione**

80.000 cicli Martindale (EN ISO 12947-2)

**Pilling**

3/4 (EN ISO 12945-2)

**Ignifugazione**

UNI 9178 11M California TB  
17:2013 EN 1021-1&2

**Solidità alla luce**

4/5 (EN ISO 105-B02)

**Solidità allo sfregamento**

Umido 4/5; Secco 4/5 (EN ISO 105X12)

**Lavaggio**

Lavaggio a secco  
Seguire simboli ISO

**Composition**

65% Wool  
15% Alpaca  
20% Polyamide

**Width**

App. 142 cm

**Weight**

420 g/m<sup>2</sup> (+/- 5%)

**Abrasion resistance**

80.000 Martindale cycles (EN ISO 12947-2)

**Pilling**

3/4 (EN ISO 12945-2)

**Flammability**

UNI 9178 11M California TB  
17:2013 EN 1021-1&2

**Light fastness**

4/5 (EN ISO 105-B02)

**Fastness to rubbing**

Wet 4/5; Dry 4/5  
(EN ISO 105X12)

**Cleaning**

Dry-cleaning  
Please see the ISO symbols



This fabric is yarn-dyed. Possible irregularities of the yarn must be considered as a feature of the product because it's a natural yarn. Batch to batch chromatic variations must be considered as normal and are to be evaluated with the usual tolerance of this type of fabric. Work separately different delivery lots.



02



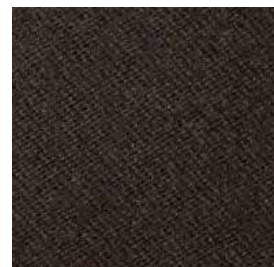
01



801



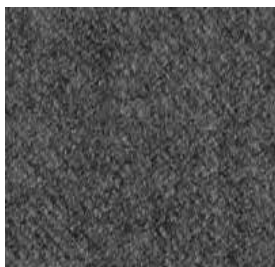
06



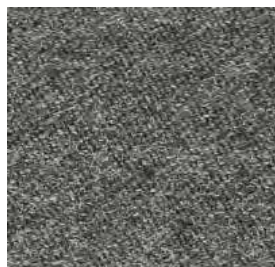
7



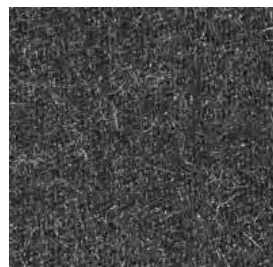
821



08



09



05



08/1



10



806



828



811



812



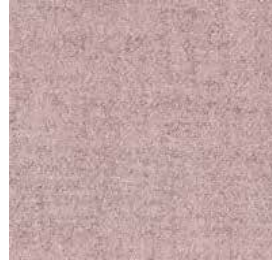
825



808



807



823



802



11



809



12



804



816



805



810



803



**ROXANA CS**

**Composition**  
100% Trevira CS

**Width**  
Ca. 140 cm

**Weight**  
450 g/m<sup>2</sup> (+/- 5%)

**Abrasion resistance**  
50.000 Martindale cycles  
(EN ISO 12947-2)

**Pilling**  
4/5 (EN ISO 12945-2)

**Flammability**  
UNI 9177 - Classe 1  
NF P 92-503-507 M1  
California TB 117:2013  
EN 1021-1&2  
BS 5852-Part 0-1 (C&M)  
DIN 4102 B1  
IMO MSC 307(88) Annex 1 Part 7-8  
UNI 9175 - 1.IM

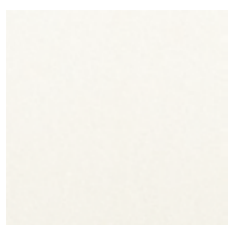
**Sound absorption**  
UNI EN ISO 354:2003 w : 0,65

**Light fastness**  
5 (EN ISO 105-B02)

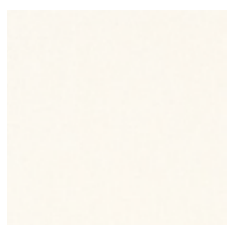
**Light fastness**  
5 (EN ISO 105-B02)

**Fastness to rubbing**  
Wet 4/5; Dry 4/5 (EN ISO 105X12)

**Cleaning**  
Dry-cleaning  
Please see the ISO symbols



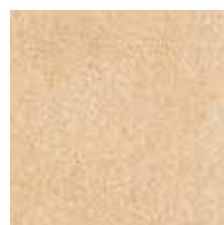
02



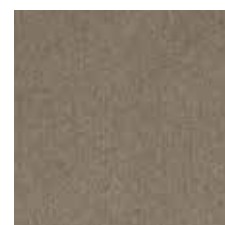
03



1720



1715



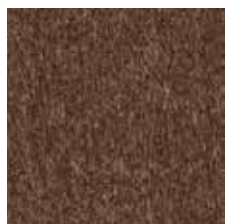
33



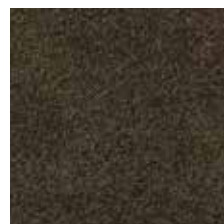
04



1709



1708



08



18



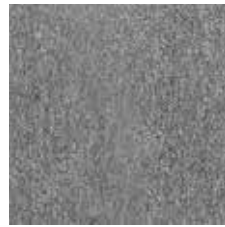
19



17



1201



11



12



1726



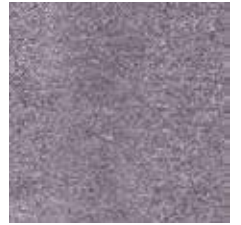
16



1001



111



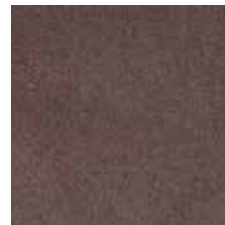
1716



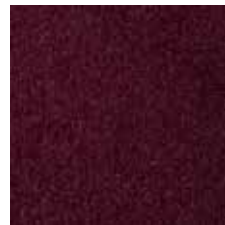
1722



35



07



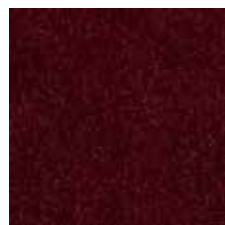
09



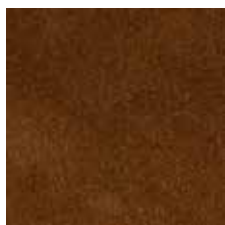
1000



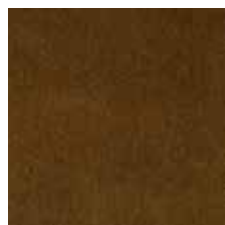
1717



10



30



28



1004



05



1803





**SOLE CS**

**Composition**  
100% Trevira CS

**Width**  
Ca. 140 cm

**Weight**  
525 g/m<sup>2</sup> (+/- 5%)

**Abrasion resistance**  
50.000 Martindale cycles  
(EN ISO 12947-2)

**Pilling**  
4/5 (EN ISO 12945-2)

**Flammability**  
UNI 9177 - Classe 1  
NFP 92-503-507 M1  
California TB 117:2013  
EN 1021-1&2  
BS 5852-Part 0-1 (C&M)  
DIN 4102 B1  
UNI 9175 - 1.IM  
NFPA 260:2013  
IMO MSC 307(88) Annex 1 Part 7-8

**Sound absorption**  
UNI EN ISO 354:2003 w : 0,60

**Light fastness**  
5 (EN ISO 105-B02)

**Light fastness**  
5 (EN ISO 105-B02)

**Fastness to rubbing**  
Wet 4/5; Dry 4/5 (EN ISO 105X12)

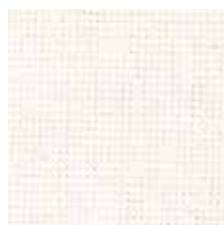
**Cleaning**  
Wet cleaning warp  
Please see the ISO symbols  
Shrinkage app. 2,5%



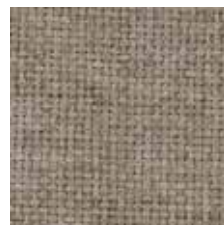
420



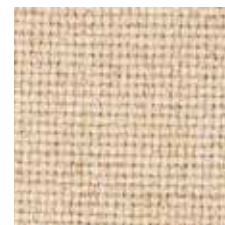
421



445



444



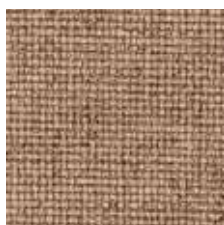
04



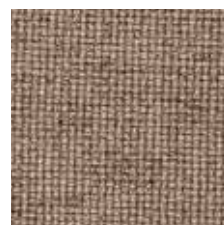
402



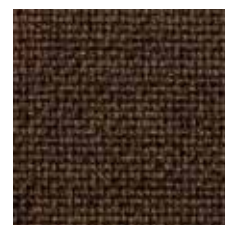
441



439



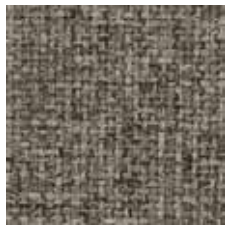
440



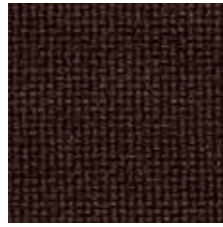
416



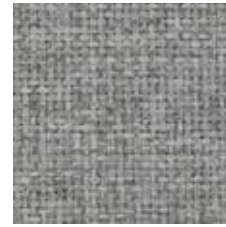
400



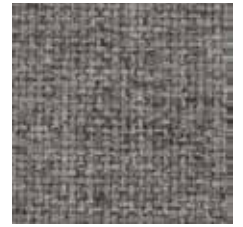
401



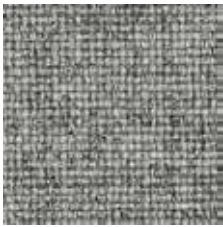
438



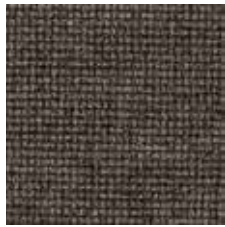
443



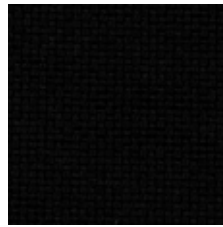
442



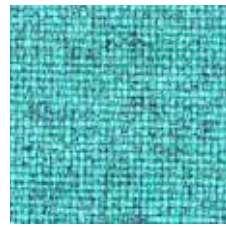
417



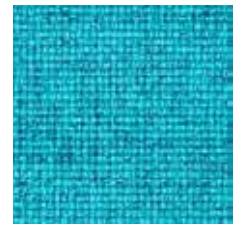
437



418



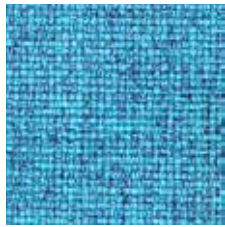
412



22



422



413



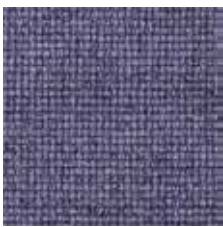
419



25



414



435



434



20



431



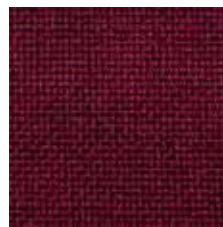
432



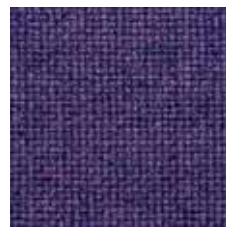
433



19



16



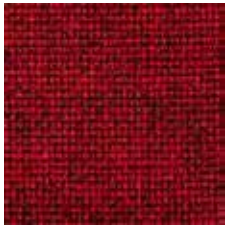
415



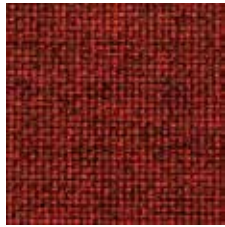
436



14



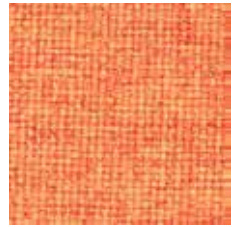
409



407



406



408



403



404



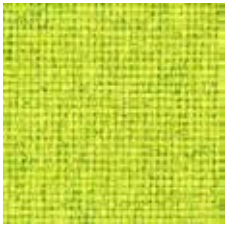
405



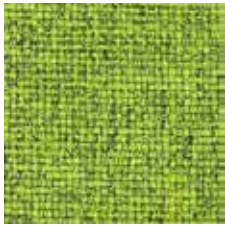
411



07



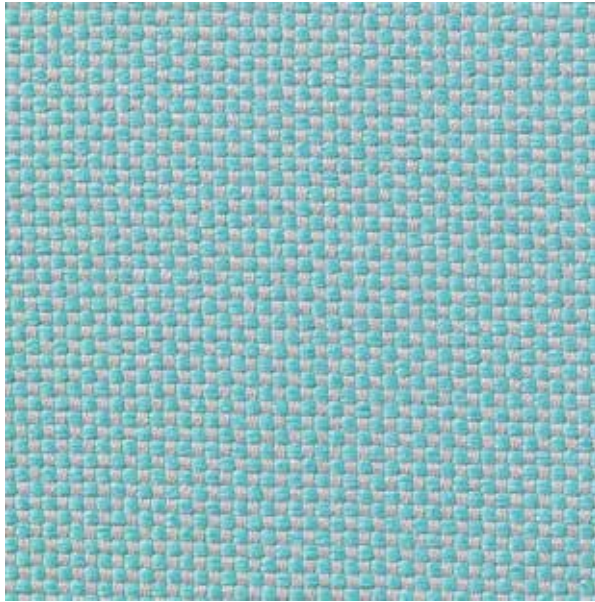
10



410



11



**7052.01**

**binder**  
upholstery 01

**description**  
chequered weave

**composition**  
100% flame retardant polyester

**width**  
± 140 cm, ± 55 inches

**weight**  
± 663 gr/m<sup>2</sup>, ± 21 oz/yd<sup>2</sup> fabrics

**flame retardancy**  
EN 1021 / 1-2  
BS 5852, crib 5  
NF P 92 / 503-507, M1  
DIN 4102, B1  
IMO 2010 FTP part 8  
UNI 9175, classe 1 IM  
Cal TB 117  
NFPA 260, class 1

**colorfastness to crocking**  
ISO 105-X12  
wet 4-5 / dry 4-5 (scale 1-5)  
AATCC 8  
wet 5 / dry 5 (scale 1-5)

**colorfastness to light**  
ISO 105-B02  
6 (scale 1-8)  
AATCC 16.3: 40 hours  
4 (scale 1-5)

**seam slippage**  
ISO 13936 - 213936-2  
warp 3 mm / weft 2 mm  
ASTM D4034  
warp 99 lbf / weft 81 lbf

**breaking strength**  
ASTM D5034  
warp 31.6 lbs / weft 60.9 lbs

**abrasion**  
ISO 12947-2  
>50.000 rubs martindale  
ASTM D4157  
42.000 double rubs wyzenbeek

**pilling**  
ISO 12945-2  
4-5 (scale 1-5)  
ASTM D3511  
5 (scale 1-5)

**care**



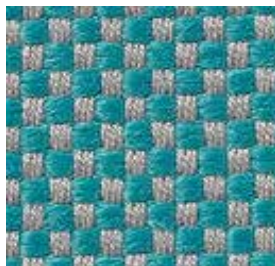
shrinkage: warp -1.6% / weft -1%



shrinkage: warp -3% / weft -1.4%



7052.01



7052.02



7052.03



7052.04



7052.05



7052.06



7052.07



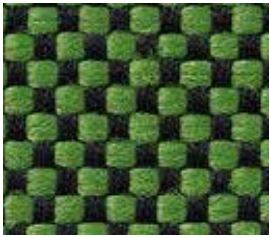
7052.08



7052.09



7052.10



7052.11



7052.12



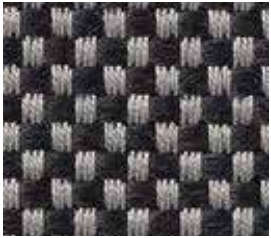
7052.13



7052.14



7052.15



7052.16



7052.17



7052.18



7052.19



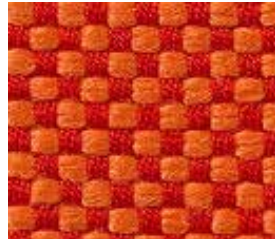
7052.20



7052.21



7052.22



7052.23



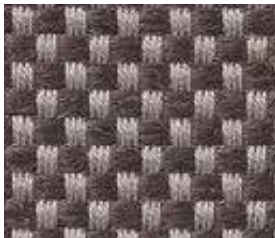
7052.24



7052.25



7052.26



7052.27



7052.28



7052.29



7052.30



7052.31



7052.32



7052.33



7052.34



7052.35



7052.36



7052.37



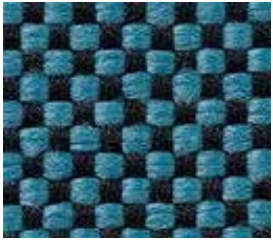
7052.38



7052.39



7052.40



7052.41



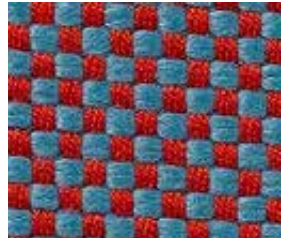
7052.42



7052.43



7052.44



7052.45



7052.46



7052.47



7052.48



7052.49



7052.50



7052.51



**7052.01**

**binder**  
upholstery 01

**description**  
blended woollen upholstery fabric

**composition**  
92% wool / 8% polyamide

**width**  
± 140 cm, ± 55 inches

**weight**  
± 530 gr/m<sup>2</sup>, ± 17 oz/yd<sup>2</sup> fabrics

**flame retardancy**  
EN 1021/1-2  
BS 5852, crib 5  
UNI 9175, classe 1 IM  
Cal TB 117-2013  
NFPA 260, class 1  
NF D 60-013 - AM18  
IMO 2010 FTP part 8

**abrasion**  
ISO 12947-2  
100.000 rubs martindale  
ASTM D4157  
35.000 double rubs wyzenbeek

**pilling**  
ISO 12945-2  
4-5 (scale 1-5)  
ASTM D3511  
5 (scale 1-5)

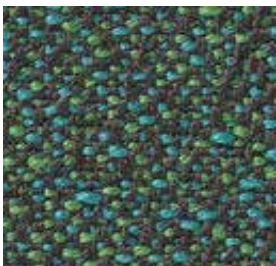
**colorfastness to crocking**  
ISO 105-X12  
wet 4-5 / dry 4-5 (scale 1-5)  
AATCC 8  
wet 5 / dry 5 (scale 1-5)

**colorfastness to light**  
ISO 105-B02  
4 - 5 (scale 1-8)  
AATCC 16.3  
5 (scale 1-5)

**seam slippage**  
ISO 13936 - 2  
warp 5 mm / weft 4.5 mm  
ASTM D4034  
warp 120 lbs / weft 87 lbs

**breaking strength**  
ASTM D5034  
warp 212 lbs / weft 191 lbs

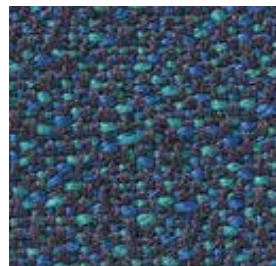
**care**



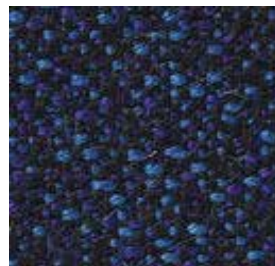
7030.14



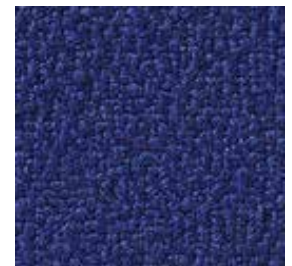
7030.13



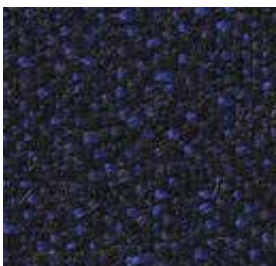
7030.10



7030.06



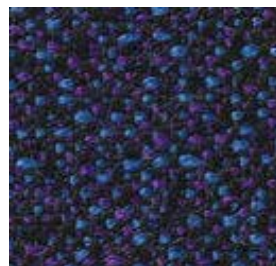
7030.05



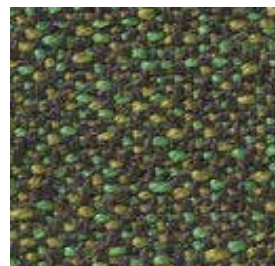
7030.09



7030.12



7030.01



7030.15



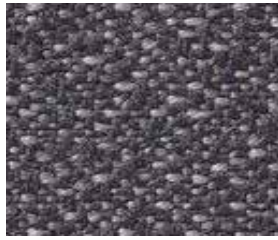
7030.16



7030.17



7030.04



7030.03



7030.08



7030.11



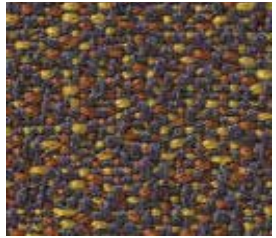
7030.07



7030.35



7030.32



7030.34



7030.20



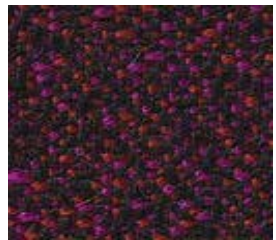
7030.24



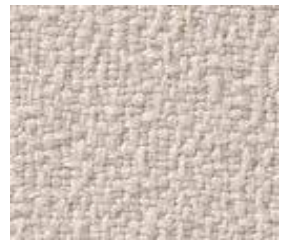
7030.36



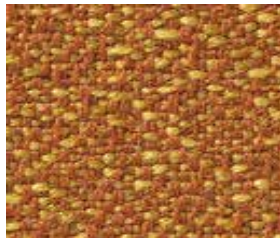
7030.31



7030.30



7030.33



7030.19



7030.29



7030.23



7030.26



7030.28



7030.18



7030.25



7030.37



7030.39



7030.38



# SOFT UNITO TIPIESSE LEATHER

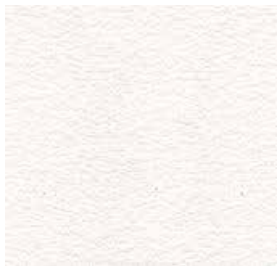


Leather: BOVINE  
Tanning: CHROMO  
Dyeing: BARREL ANILINE

Dry rubbing – 500 cycles (IUF 450)	Grey scale $\geq 4$
Wet rubbing – 250 cycles (IUF 450)	Grey scale $\geq 4$
Perspiration - 80 cycles (IUF 470)	Grey scale $\geq 3/4$
Finish adhesion (IUP 402)	Newton/cm $\geq 2$
Colouf fastness to light (IUP 402)	blue scale $\geq 5$
tear resistance (IUP 40)	Newton $\geq 20$
Flexing endurance - 50.000 cycles (IUP 20)	No surface damage or cracks $\geq 20.000$
	Ph $\geq 3,2$

## 1101 OLD NATURALE

A solid color leather with a semi-glossy appearance. The vast assortment of colors, which is renewed over the years, accompanied by the classic Madras print, makes this item one of the most versatile and refined. Thickness 0.9 - 1.1 mm  
Medium size 4.20 m2



1145 BIANCO OTTICO



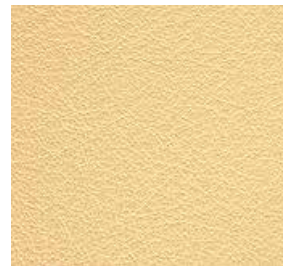
1147 BIANCO NAT



1142 MADRE PERLA



1140 CREMA



1132 VANIGLIA



1125 PAGLIA



1115 GIALLO



1110 PESCA



1167 MANDARANCIO



1168 ARANCIO



1101 OLD NATURALE



1169 MATTONE



1085 FIAMMA



1082 MELOGRANO



1080 BULGARO



1040 CARMELLO



1045 CACAO



1035 CIOCCOLATO



1150 TESTA DI MORO



1155 DARK BROWN



1095 ICE CREAM



1090 CONFETTO



1087 ROSA ANTICO



1075 LILLA



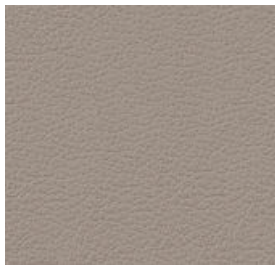
1170 VIOLETTA



1175 ZINCO



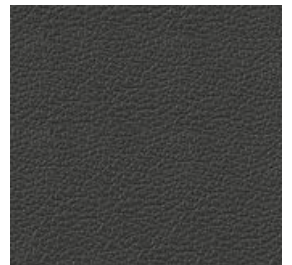
1005 ALLUMINIO



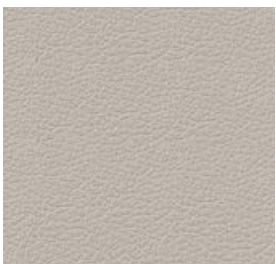
1118 STONE



1004 GRIGIO FUMO



1003 ANTRACITE



1002 CENERE



1160 RENA



1165 SENTIERO



1172 MALTA



1173 TOPO



1166 CHAMPAGNE



1050 FAGGIO



1042 NOCE



1174 MARRONE



1032 FANGO



1027 VERDE PRATO



1020 VERDE MELA



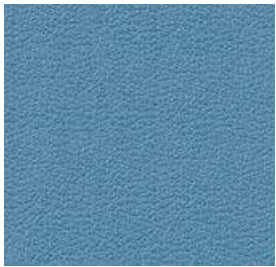
1030 MUSCHIO



1010 VERDE KJ



1000 NERO



1065 CELESTE



1171 LAVANDA



1060 AZZURRO



1055 BLU KJ



1070 PRUGNA



accentto

**Italian Designer Furniture since 1931**

Accentto Srl

Via Palmarina 18, 33048 San Giovanni al Natisone Udine/Italy

Ph. +39 0432 746590 - Fax +39 0432 743183

[info@accentosrl.it](mailto:info@accentosrl.it)

[www.accentosrl.it](http://www.accentosrl.it)

Facebook - Instagram - Pinterest