

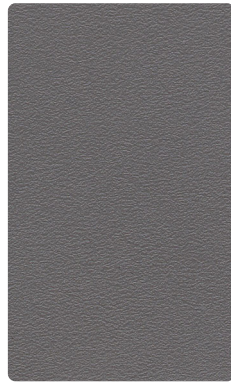
Materials



PP3
Nero
Black



PP5
Antracite
Anthracite



PP12
Grafite
Graphite



PP16
Latte
Milk



PP17
Rosa Pallido
Pale Pink



PP18
Ghiaccio
Ice



PP19
Rosso Ossido
Oxide Red



PP20
Marrone
Brown



PP21
Verde Scuro
Dark Green



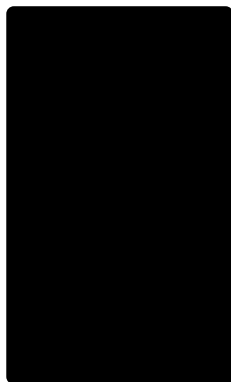
PP22
Blu Avio
Air Force Blue



PP23
Ruggine
Rust



PP24
Beige
Beige



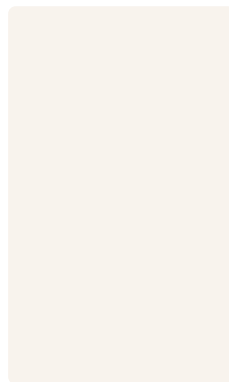
M7
Nero
Black



M8
Marrone
Brown



M12
Grafite
Graphite



M16
Latte
Milk



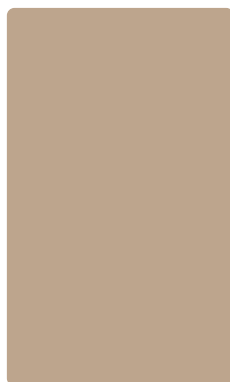
M19
Rosso ossido
Oxide red



M22
Blu avio
Air force blue



M23
Ruggine
Rust



M24
Beige
Beige



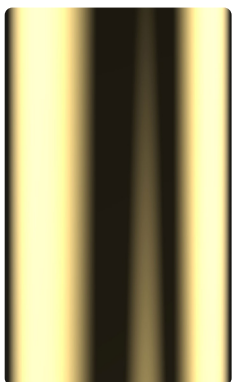
AL1
Alluminio gofrato
Embossed aluminium



AL2
Alluminio satinato
Satinated aluminium



CRO
Cromato
Chromed



SG
Oro
Gold



BR
Ottone
Brass



NK
Nickel nero
Black nickel



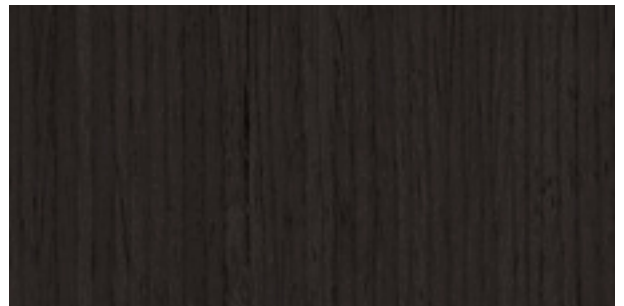
W1
Frassino naturale
Natural ash



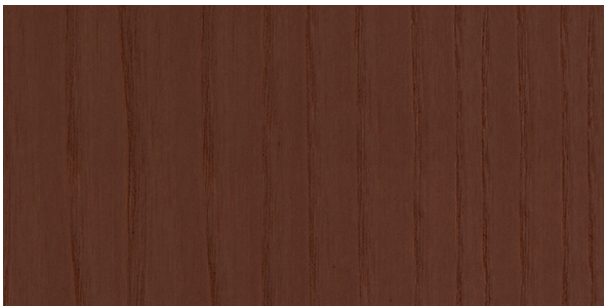
W1
Basic veneer naturale
Natural basic veneer



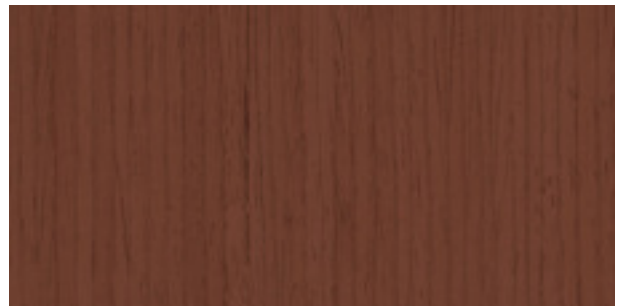
W2
Frassino tinto nero
Black stained ash



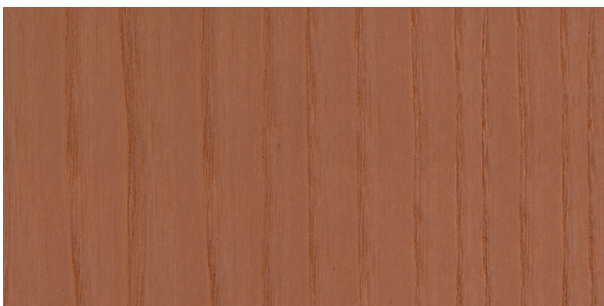
W2
Basic veneer nero
Black stained basic veneer



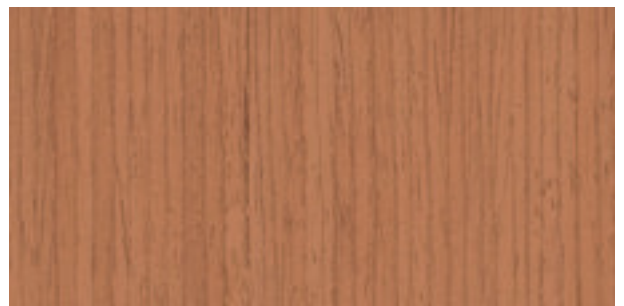
W3
Frassino tinto noce
Walnut stained ash



W3
Basic veneer tinto noce
Walnut stained basic veneer



W4
Frassino tinto ciliegio
Cherry stained ash



W4
Basic veneer tinto ciliegio
Cherry stained basic veneer



B1
Faggio naturale
Natural beech



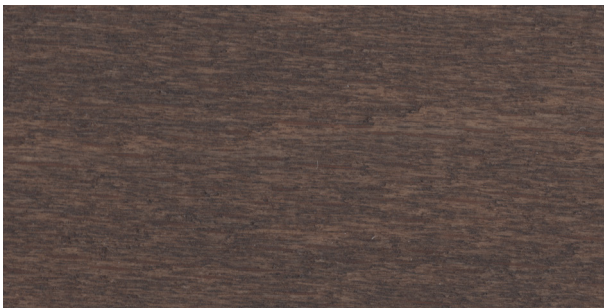
B2
Faggio tinto nero
Black stained beech



B3
Faggio tinto noce
Walnut stained beech



B4
Faggio tinto ciliegio
Cherry stained beech



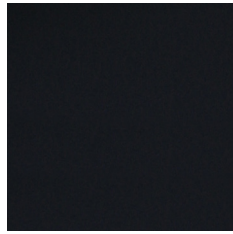
B5
Faggio tinto wengé
Wengé stained beech

Cuoietto/Hard Leather

arrmet



LT1
Bianco
White



LT2
Nero
Black



LT5
Cognac
Cognac

**Resistenza al fuoco/
Flame resistance**
UNI 9175 (11M)

**Solidità alla luce/
Light fastness**
UNI EN ISO 105-B02 (4-5)

Corde/Ropes

**Anima (Polipropilene 100%)
Core (Polypropylene 100%)**

**Calza (Poliestere 100%)
Cover (Polyester 100%)**



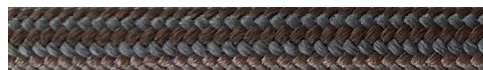
Ø 8 mm



RP1
Bianco/*White*



RP2
Nero/*Black*



RP3
Marrone/*Brown*



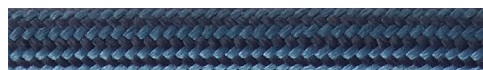
RP4
Rosso/*Red*



RP5
Beige/*Beige*

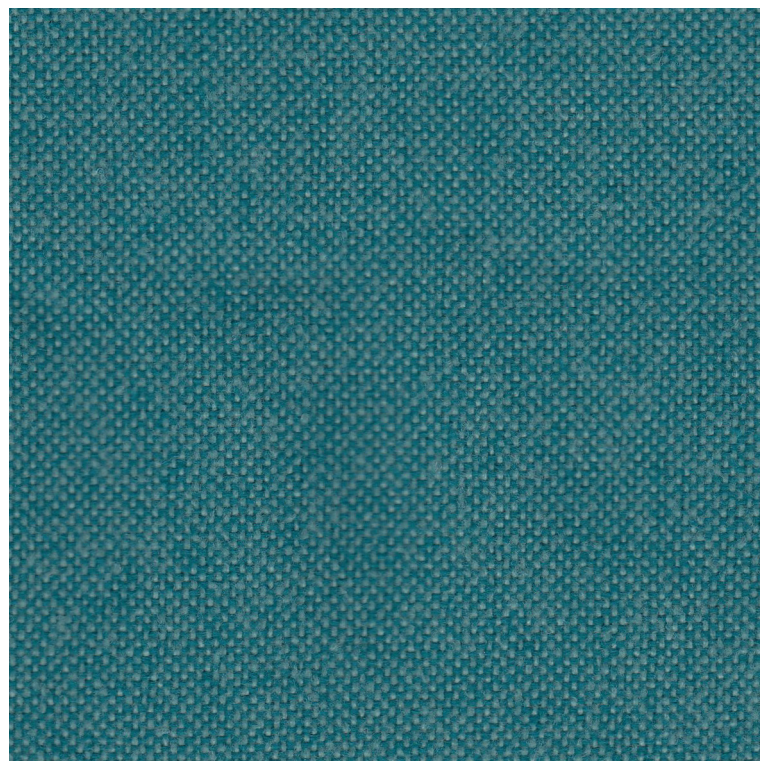


RP6
Verde/*Green*



RP7
Blu/*Blue*

**Solidità alla luce/
Light fastness**
UNI EN ISO 105-B02 (7)

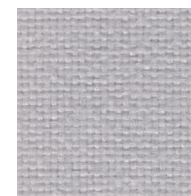


9609

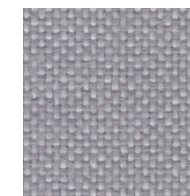
JET

Tipologia: Trevira
Composizione: 100% poliestere (Trevira cs)
Larghezza: 140 cm
Peso: 365 g/mtl
Pulizia e manutenzione: contattare il fornitore al sito www.fidivi.com.

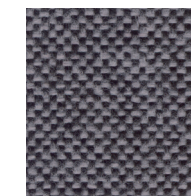
Type: Trevira
Composition: 100% polyester (Trevira cs)
Width: 140 cm
Weight: 365 g/lm
Cleaning and maintenance: contact the supplier through website www.fidivi.com.



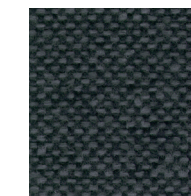
8001



9803



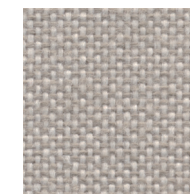
9294



9806



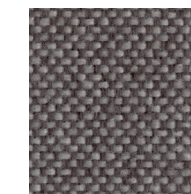
1001



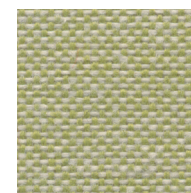
9110



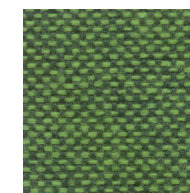
2024



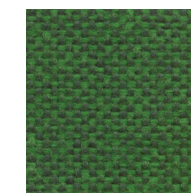
9109



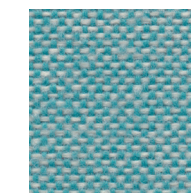
9701



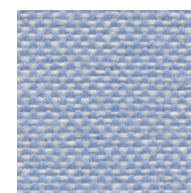
9702



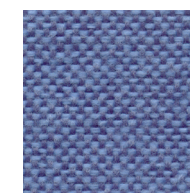
9704



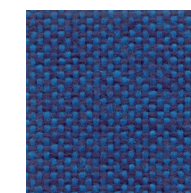
9610



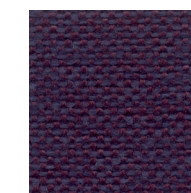
9600



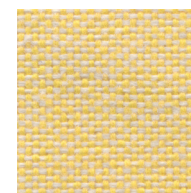
9601



9603



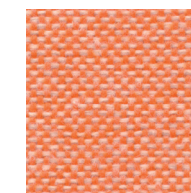
9607



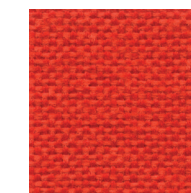
9302



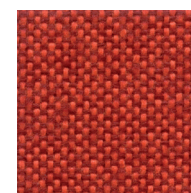
9304



9301



9403



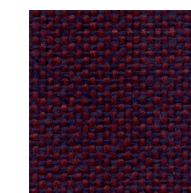
9402



9401



4018



9501

Resistenza al fuoco / Flame resistance

EN 1021-1/2
 BS 5852-5
 BS 7176 (Medium)
 CA TB 117-2013
 NFPA 260 (1)
 DIN 4102-1 (B1)
 ÖNORM A3800-1 (B1-Q1)
 NF D 60-013
 NF P 92-507 (M1)
 UNI 9175 (1IM)
 IMO FTP 307-8

Solidità alla luce / Light fastness

UNI EN ISO 105-B02 (6)

Resistenza all'abrasione / Abrasion resistance

UNI EN ISO 12947-2 (≈ 65.000 Martindale)

Solidità allo sfregamento / Fastness to rubbing

UNI EN ISO 105-X12 (a secco/dry rubbing 4-5)
 UNI EN ISO 105-X12 (a umido/wet rubbing 4-5)

Pilling

UNI EN ISO 12945-2 (5)

Note

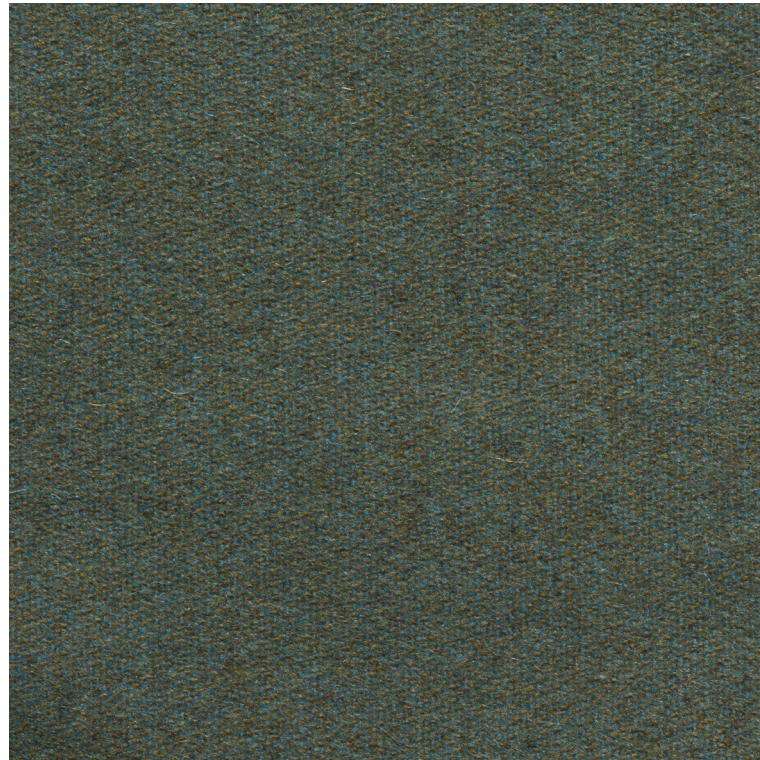
Leggere differenze di colore fra una partita e l'altra sono da considerarsi normali.

Consultare sempre i siti dei produttori per verificare eventuali aggiornamenti sui test.

Notes

Slight colour differences between lots must be considered normal.

Always consult manufacturers' websites to check for any test updates.



042

ST. MORITZ

Tipologia: lana
Composizione: 80% lana, 20% poliammide
Larghezza: 140 cm
Peso: 440 g/mtl
Pulizia e manutenzione: contattare il fornitore al sito www.linterno.it.

Type: wool
Composition: 80% wool, 20% polyamide
Width: 140 cm
Weight: 440 g/lm
Cleaning and maintenance: contact the supplier through website www.linterno.it.

Resistenza al fuoco / Flame resistance
 EN 1021-1/2
 IMO FTP 307-8

Solidità alla luce / Light fastness
 UNI EN ISO 105-B02 (5)

Resistenza all'abrasione / Abrasion resistance
 UNI EN ISO 12947-2 (≈ 80.000 Martindale)

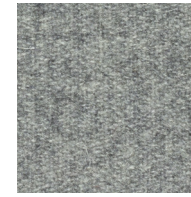
Solidità allo sfregamento / Fastness to rubbing
 UNI EN ISO 105-X12 (a secco/dry rubbing 4-5)
 UNI EN ISO 105-X12 (a umido/wet rubbing 4)

Pilling
 UNI EN ISO 12945-2 (3)

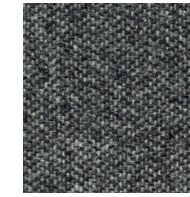
Note
 Leggere differenze di colore fra una partita e l'altra sono da considerarsi normali.
 Consultare sempre i siti dei produttori per verificare eventuali aggiornamenti sui test.

Notes
 Slight colour differences between lots must be considered normal.

Always consult manufacturers' websites to check for any test updates.



155



159



162



163



001



005



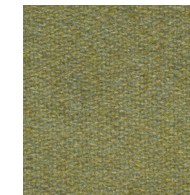
025



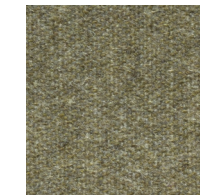
081



047



034



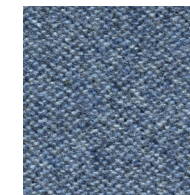
038



099



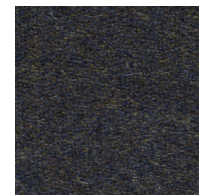
130



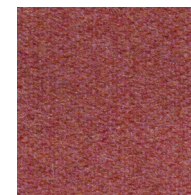
142



148



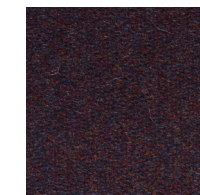
091



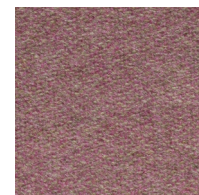
108



075



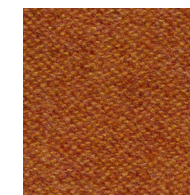
078



122



059



064



069



067



149

SUPERB

Tipologia: velluto
Composizione: 100% poliestere
Larghezza: 140 cm
Peso: 400 g/m²
Pulizia e manutenzione: contattare il fornitore al sito www.flukso.it.

Type: velvet
Composition: 100% polyester
Width: 140 cm
Weight: 400 g/m²
Cleaning and maintenance: contact the supplier through website www.flukso.it.

Resistenza al fuoco / Flame resistance

UNI 8456 – 9174 CLASSE 1
 UNI 9175 CLASSE 1IM
 EN 1021-1
 EN 1021-2
 BS 5852 CRIB 5
 DIN 4102 B1
 NF P 92 503-507 M1
 TB 117:2013
 UNI EN 13773:2004 CLASSE 1
 NFPA 701:2015

Solidità alla luce / Light fastness

UNI EN ISO 105-B02 (≥5)

Resistenza all'abrasione / Abrasion resistance

UNI EN ISO 12947-2 (≈ 60.000 Martindale)

Solidità allo sfregamento / Fastness to rubbing

UNI EN ISO 105-X12 (a secco/dry rubbing 4)
 UNI EN ISO 105-X12 (a umido/wet rubbing 4)

Pilling

UNI EN ISO 12945-2 (5)



For further information
flukso.it

Note

Leggere differenze di colore fra una partita e l'altra sono da considerarsi normali.

Consultare sempre i siti dei produttori per verificare eventuali aggiornamenti sui test.

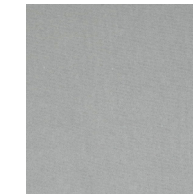
Notes

Slight colour differences between lots must be considered normal.

Always consult manufacturers' websites to check for any test updates.



153



152



151



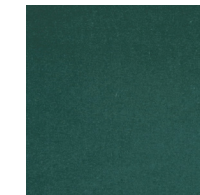
147



137



136



134



131



130



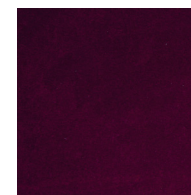
126



127



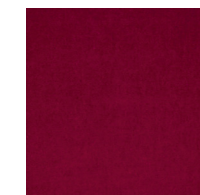
128



123



119



118



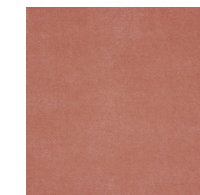
117



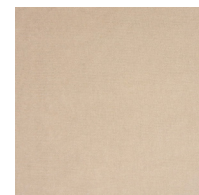
112



110



114



104



103



143



145



148

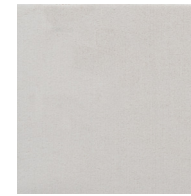


0530

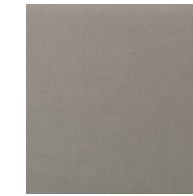
NO_FIRE

Tipologia: velluto
Composizione: 100% trevira
Larghezza: 140 cm
Peso: 540/580 g/mtl
Pulizia e manutenzione: contattare il fornitore al sito www.lopificio.it.

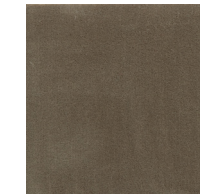
Type: velvet
Composition: 100% trevira
Width: 140 cm
Weight: 540/580 g/lm
Cleaning and maintenance: contact the supplier through website www.lopificio.it.



0010



0312



0257



0247



0219



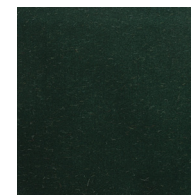
0236



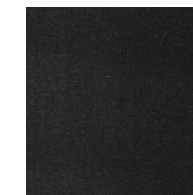
0147



0618



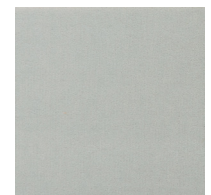
0628



0246



0900



0310

Resistenza al fuoco / Flame resistance

BS 5852-5
 CA TB 117-2013
 UNI 9175 (1IM)

Solidità alla luce / Light fastness

UNI EN ISO 105-B02 (6-7)

Resistenza all'abrasione / Abrasion resistance

UNI EN ISO 12947-2 (≈ 140.000 Martindale)

Solidità allo sfregamento / Fastness to rubbing

UNI EN ISO 105-X12 (a secco/dry rubbing 4-5)
 UNI EN ISO 105-X12 (a umido/wet rubbing 4-5)

Pilling

UNI EN ISO 12945-2 (5)

Note

Leggere differenze di colore fra una partita e l'altra sono da considerarsi normali.

Consultare sempre i siti dei produttori per verificare eventuali aggiornamenti sui test.

Notes

Slight colour differences between lots must be considered normal.

Always consult manufacturers' websites to check for any test updates.



0719



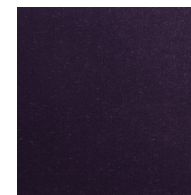
0720



0715



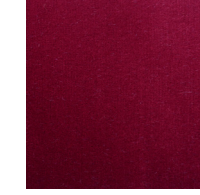
0837



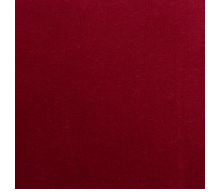
0574



0505



0527



0513



0425



111

MAGNUM

Tipologia: spalmato
Composizione: 88% polivinil cloruro, 7% poliestere, 4% cotone, 1% poliuretano
Larghezza: 140 cm
Peso: 715 g/m2
Pulizia e manutenzione: contattare il fornitore al sito www.abitex.eu.

Type: eco-leather
Composition: 88% polyvinyl chloride, 7% polyester, 4% cotton, 1% polyurethane
Width: 140 cm
Weight: 715 g/m2
Cleaning and maintenance: contact the supplier through website www.abitex.eu.

Resistenza al fuoco / Flame resistance

EN 1021-1/2
 BS 5852-0/1/5(*)
 CA TB 117-2013
 DIN 4102-1 (B1)(*)
 NF P 92-507 (M1)(*)
 UNI 9175 (IIM)
 IMO FTP 307-8

Solidità alla luce / Light fastness

UNI EN ISO 105-B02 (≥7)

Resistenza all'abrasione / Abrasion resistance

UNI EN ISO 12947-2 (≈ 200.000 Martindale)

Solidità allo sfregamento / Fastness to rubbing

UNI EN ISO 105-X12 (a secco/dry rubbing ≥5)
 UNI EN ISO 105-X12 (a umido/wet rubbing ≥5)

* per passare il test è necessario un pre-trattamento.

* to pass this test, flame retardant treatment is necessary.

Note

Leggere differenze di colore fra una partita e l'altra sono da considerarsi normali.

Consultare sempre i siti dei produttori per verificare eventuali aggiornamenti sui test.

Notes

Slight colour differences between lots must be considered normal.

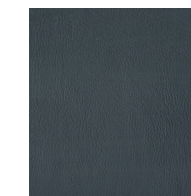
Always consult manufacturers' websites to check for any test updates.



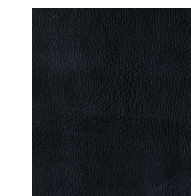
105



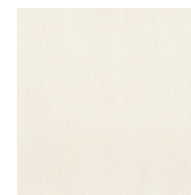
603



602



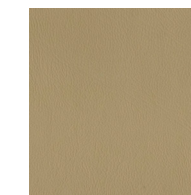
200



100



103



400



406



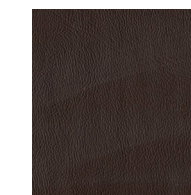
503



407



404



405



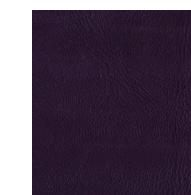
310



304



302



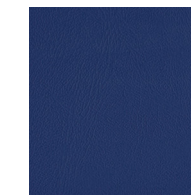
313



001



706



701



700



500



804



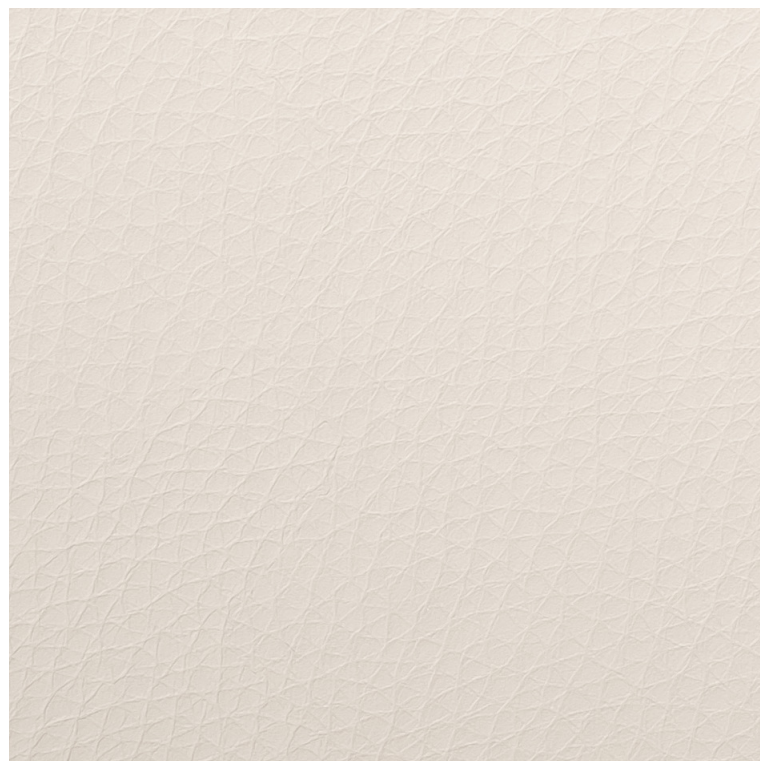
803



002

ABITEX

For further information
abitex.eu



6702

DOLCE

Tipologia: spalmato
Composizione: 100% poliuretano
Larghezza: 137 cm
Peso: 370 g/m²
Pulizia e manutenzione: contattare il fornitore al sito www.spradling.eu.

Type: eco-leather
Composition: 100% polyurethane
Width: 137 cm
Weight: 370 g/m²
Cleaning and maintenance: contact the supplier through website www.spradling.eu



6727



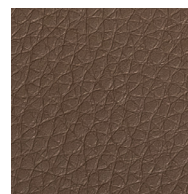
6701



6706



6708



6712



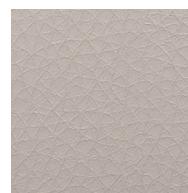
6709



6713



6714



6726



6728

Resistenza al fuoco / Flame resistance

EN 1021-1/2
 CA TB 117-2013
 IMO FTP 307-8

Resistenza all'abrasione / Abrasion resistance

UNI EN ISO 12947-2 (≈ 300.000 Martindale)

Note

Leggere differenze di colore fra una partita e l'altra sono da considerarsi normali.

Consultare sempre i siti dei produttori per verificare eventuali aggiornamenti sui test.

Notes

Slight colour differences between lots must be considered normal.

Always consult manufacturers' websites to check for any test updates.





4004

SILVERTEX

Tipologia: spalmato
Composizione: 100% vinile
Larghezza: 137 cm
Peso: 685 g/m2
Pulizia e manutenzione: contattare il fornitore al sito www.spradling.eu.

Type: eco-leather
Composition: 100% vinyl
Width: 137 cm
Weight: 685 g/m2
Cleaning and maintenance: contact the supplier through website www.spradling.eu

Resistenza al fuoco / Flame resistance

EN 1021-1/2
 CA TB 117-2013
 NF P 92-507 (M2)
 DIN 4102-1 (B2)
 ÖNORM A3800-1 (B1-Q1)
 UNI 9175 (1IM)
 IMO FTP 307-8
 FAR/JAR 25.853

Resistenza all'abrasione / Abrasion resistance

UNI EN ISO 12947-2 (≈ 300.000 Martindale)

Note

Leggere differenze di colore fra una partita e l'altra sono da considerarsi normali.

Consultare sempre i siti dei produttori per verificare eventuali aggiornamenti sui test.

Notes

Slight colour differences between lots must be considered normal.

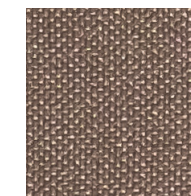
Always consult manufacturers' websites to check for any test updates.



1077



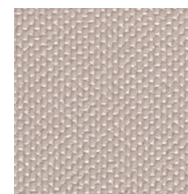
1051



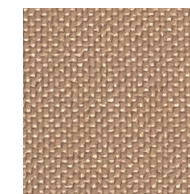
0009



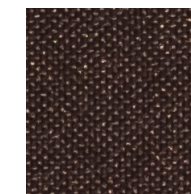
0002



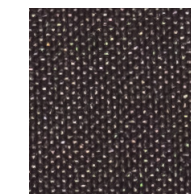
0001



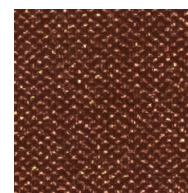
1010



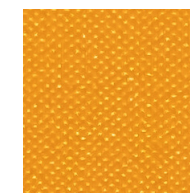
0005



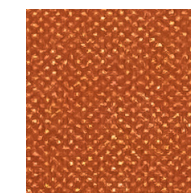
4024



0073



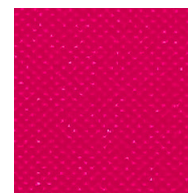
6065



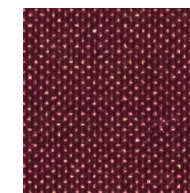
2003



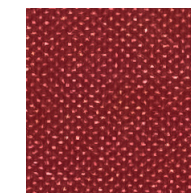
6061



7002



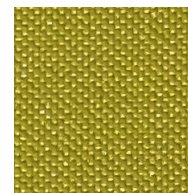
6004



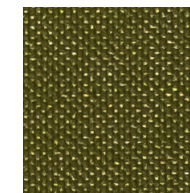
2064



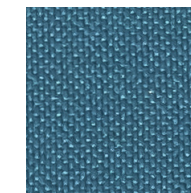
2011



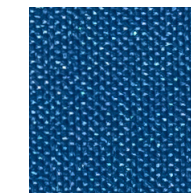
5008



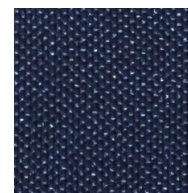
5020



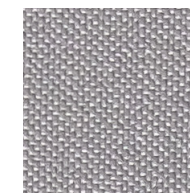
3001



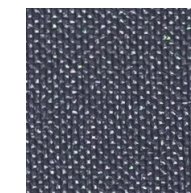
3066



3007



4001

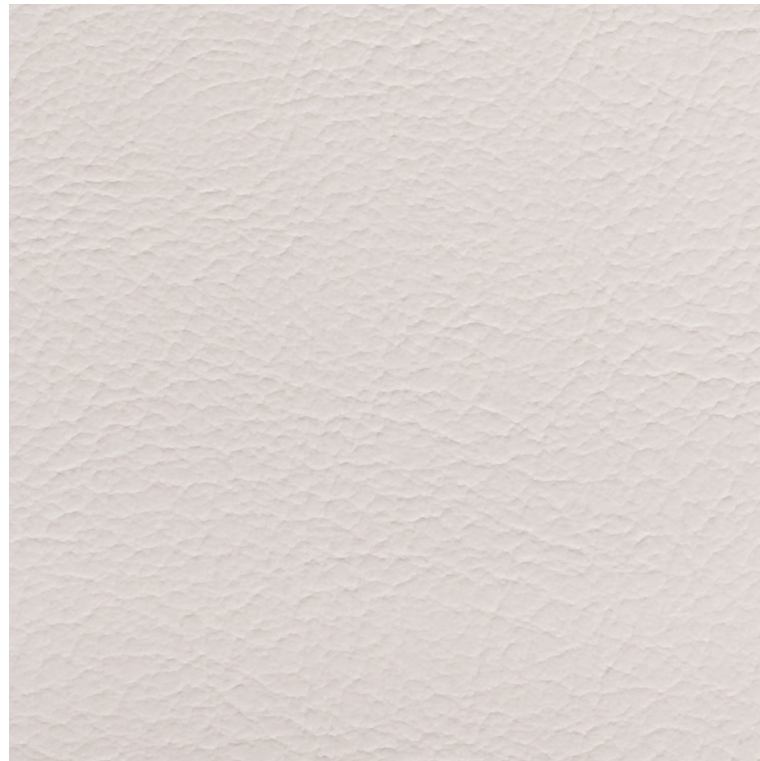


4002



9001





8032

VALENCIA

Tipologia: spalmato
Composizione: 100% vinile
Larghezza: 137 cm
Peso: 650 g/m2
Pulizia e manutenzione: contattare il fornitore al sito www.spradling.eu.

Type: eco-leather
Composition: 100% vinyl
Width: 137 cm
Weight: 650 g/m2
Cleaning and maintenance: contact the supplier through website www.spradling.eu



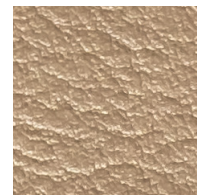
8020



1020



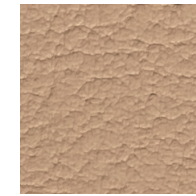
4020



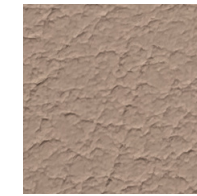
6020



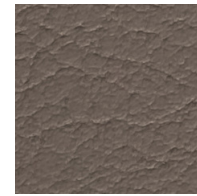
1048



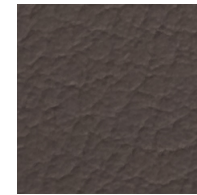
1050



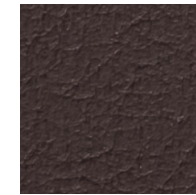
0034



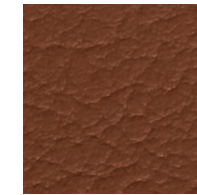
5002



4041



0020



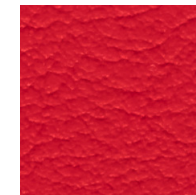
2115



2111



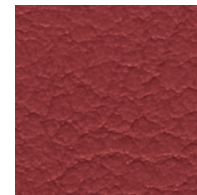
6013



2075



2074



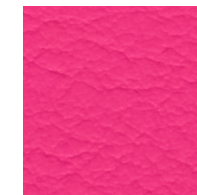
2062



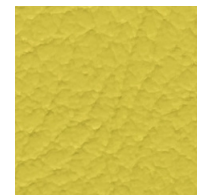
2002



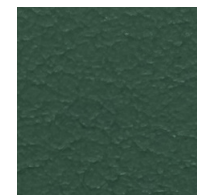
2113



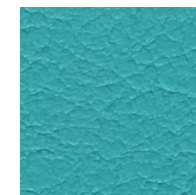
2021



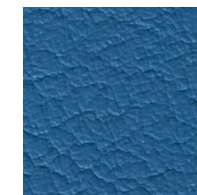
2110



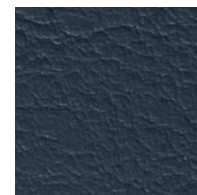
5069



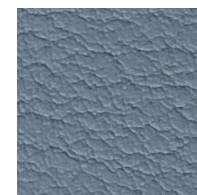
5057



3069



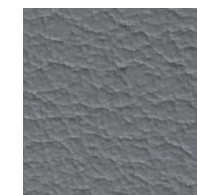
2108



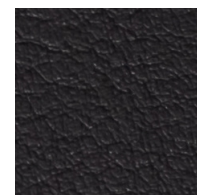
4042



4040



4043



9035

Resistenza al fuoco / Flame resistance

EN 1021-1/2
 CA TB 117-2013
 NF P 92-507 (M2)
 DIN 4102-1 (B2)
 ÖNORM A3800-1 (B1-Q1)
 UNI 9175 (1IM)
 IMO FTP 307-8
 FAR/JAR 25.853

Resistenza all'abrasione / Abrasion resistance

UNI EN ISO 12947-2 (≈ 300.000 Martindale)

Note

Leggere differenze di colore fra una partita e l'altra sono da considerarsi normali.

Consultare sempre i siti dei produttori per verificare eventuali aggiornamenti sui test.

Notes

Slight colour differences between lots must be considered normal.

Always consult manufacturers' websites to check for any test updates.





15

EVE

Tipologia: spalmato biobased
Composizione: 40% PVC, 40% componenti vegetali, 20% cotone biologico.

Larghezza: 140 cm

Peso: 650 g/m²

Pulizia e manutenzione: contattare il fornitore al sito www.flukso.it.

Type: bio-based eco-leather

Composition: 40% PVC, 40% plant components, 20% organic cotton.

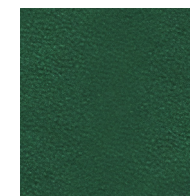
Width: 140 cm

Weight: 650 g/m²

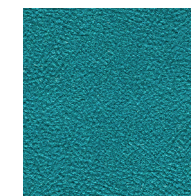
Cleaning and maintenance: contact the supplier through website www.flukso.it.



1



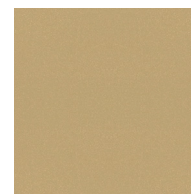
5



6



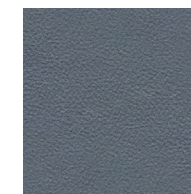
7



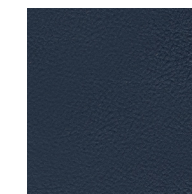
8



10



11



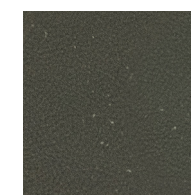
12



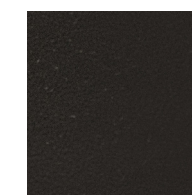
13



14



17



18

Resistenza al fuoco / Flame resistance

EN 1021-1/2
 BS 5852-5
 CA TB 117-2013
 NF P 92-507 (M2)
 UNI 9175 (1IM)

Solidità alla luce / Light fastness

UNI EN ISO 105-B02 (6)

Resistenza all'abrasione / Abrasion resistance

UNI EN ISO 12947-2 (≈ 100.000 Martindale)

Solidità allo sfregamento / Fastness to rubbing

UNI EN ISO 105-X12 (a secco/dry rubbing 5)
 UNI EN ISO 105-X12 (a umido/wet rubbing 5)

Note

Leggere differenze di colore fra una partita e l'altra sono da considerarsi normali.

Consultare sempre i siti dei produttori per verificare eventuali aggiornamenti sui test.

Notes

Slight colour differences between lots must be considered normal.

Always consult manufacturers' websites to check for any test updates.



For further information
flukso.it



820

LEATHER

Tipologia: pelle
Composizione: 100% pelle
Pulizia e manutenzione: per pulire macchie o gocce di liquido asciugare delicatamente l'area interessata con un panno inumidito d'acqua tiepida. Fare attenzione a non bagnare eccessivamente l'area, altrimenti tamponare ulteriormente con un panno asciutto. Consigliamo di non strofinare mai la superficie troppo energicamente.

Type: leather
Composition: 100% leather
Cleaning and maintenance: to clean stains or drops of liquid, gently wipe the affected area gently with a cloth dampened with warm water. Be careful not to wet the area excessively, otherwise dab with a dry cloth. We recommend never rubbing the surface too hard.

Resistenza al fuoco / Flame resistance
 BS 5852-0/1
 CA TB 117-2013
 IMO FTP 307-8

Solidità alla luce / Light fastness
 UNI EN ISO 105-B02 (8)

Solidità allo sfregamento / Fastness to rubbing
 UNI EN ISO 11640 (a secco/dry rubbing 4-5)
 UNI EN ISO 11640 (a umido/wet rubbing 4-5)

Note
 Leggère differenze di colore fra una partita e l'altra sono da considerarsi normali.

Notes
 Slight colour differences between lots must be considered normal.



810



872



812



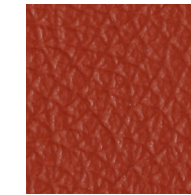
813



930



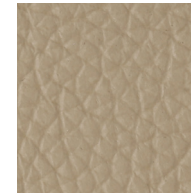
931



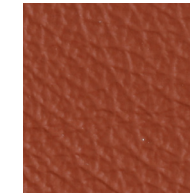
840



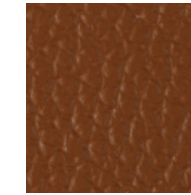
844



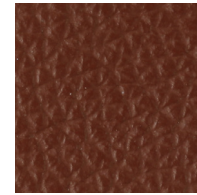
826



841



823



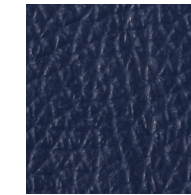
822



824



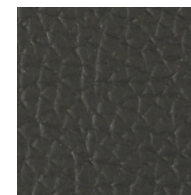
833



856



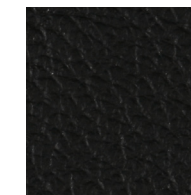
859



858



825



860

FIELD 2

Trevira (100% fibra di poliestere)
Trevira (100% polyester fiber)

PATIO

Trevira (100% fibra di poliestere)
Trevira (100% polyester fiber)

REMIX 3

Lana (90% lana, 10% nylon)
Wool (90% wool, 10% nylon)

RE-WOOL

Lana (45% lana vergine, 45% lana riciclata, 10% nylon)
Wool (45% new wool, 45% recycled wool, 10% nylon)

HERO

lana (96% lana vergine, 4% nylon)
Wool (96% new wool, 4% nylon)

CANVAS 2

lana (90% lana vergine, 10% nylon)
Wool (90% new wool, 10% nylon)

STEELCUT TRIO 3

Lana (90% lana vergine pettinata, 10% nylon)
Wool (90% worsted new wool, 10% nylon)

VIDAR 3

Lana (94% lana vergine, 6% nylon)
Wool (94% new wool, 6% nylon)

DIVINA MELANGE 3

lana (100% lana vergine)
Wool (100% new wool)

GENTLE 2

Lana (60% lana, 20% polimmidica, 20% poliestere)
Wool (60% wool, 20% polyamide, 20% polyester)

HARALD 3

Velluto (100% cotone)
Velvet (100% cotton)

	DIVINA MELANGE 3	STEELCUT TRIO 3	REMIX 3	RE-WOOL	HERO	CANVAS 2	FIELD 2	VIDAR 3	PATIO	GENTLE 2	HARALD 3
EN 1021-1/2	●	●	●	●	●	●	●	●	●	●	●
BS 5852	0/1/5	0/1/3/5(*)	0/1/3/5(*)	0/1/3/5(*)	0/1/5(*)	0/1/3/5(*)	5	2/3/5(*)	0/1/5	0/1	
CAT B 117-2013	●	●	●	●	●	●	●	●	●	●	
DIN 4102-1							B1	B2	B1	B2	
NF P 92-507							M1		M1		
NFD 60-013	●	●	●	●	●	●		●	●		
ÖNORM A3800-1	B1-Q1	B1-Q1	B1-Q1	B1-Q1		B1-Q1	B1-Q1	B1-Q1	B1-Q1		
UNI 9175	1IM	1IM	1IM	1IM	1IM	1IM	1IM	1IM	1IM		
IMO FTP 307-8	●	●	7(*)/8	●	7(*)/8	●	●	●	●	●	
FAR/JAR 25.853							●				
NFPA 260	1	1	1			1					
AS.NZS 1530.3	●	●	●	●		●					●
AS.NZS 3837		2	2		2						1
Solidità alla luce											
Light fastness	5-7	5-7	6-7	5-7	5-7	6-7	5-7	5-7	7	6-7	5-6
UNI EN ISO 105-B02											
Resistenza all'abrasione											
Abrasion resistance											
UNI EN ISO 12947-2	≈ 45.000	100.000	100.000	100.000	≈ 45.000	100.000	≈ 80.000	100.000	50.000	≈ 90.000	100.000
Martindale											
Solidità allo sfregamento											
Fastness to rubbing											
UNI EN ISO 105-X12	secco/ dry rubbing	4-5	4-5	4-5	4-5	4-5			4-5	4-5	
	umido/ wet rubbing	3-5	4-5	4-5	4-5	4-5			4-5	4-5	
Pilling											
UNI EN ISO 12945-2		3	4	4	4	3-4	4	4-5	4	4-5	4-5
Uso											
Use	interno/ indoor	●	●	●	●	●	●	●		●	●
	esterno/ outdoor								●		

Pulizia e manutenzione: contattare il fornitore al sito kvadrat.dk. **Cleaning and maintenance:** contact the supplier through kvadrat.dk
* per passare il test è necessario un pre-trattamento. *To pass this test flame retardant treatment is necessary.

**Nella stampa su carta
la tonalità dei colori non
può essere riprodotta
fedelmente. Arrmet Srl
si riserva la facoltà
di apportare modifiche
in qualsiasi momento
e senza preavviso.**

***During printing process,
colour tones may not
be reproduced faithfully.
Arrmet Srl reserves
the right to make changes
at any time and without
any previous notice.***