

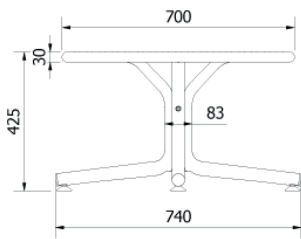
Ref. 05403 - EAN 8411344054031

TABLES BINI TABLETOP SAND

Designed by Joan Gaspar

DESCRIPTION

Bini Lounge table for indoor and outdoor use. Made of polypropylene with fiberglass, with UV protection. Weight 5.5 kg



MEASUREMENTS

H 40cm × Ø 70cm
H 15.75in × Ø 27.56in

CHARACTERISTICS

Weight 5,5 Kg.

STD units	Packaging dim. (cm)	Units Container 20'	Units Container 40'	Units Container HC	Units Trayler 70m ³	Units Truck 100m ³
1X	73 × 71 × 13	450	912	1056	1254	1360

COLOR



Sand
NSC S 5010- Y 10 R
RAL 1019

TUBE FINISH

Textured

SUSTAINABLE PRODUCTION - ENVIRONMENTAL COMMITMENT



Resol invests money and resources for research and search for more sustainable processes.



All Resol products are produced with a responsible use of water.



Dangerous chemicals are not used under any circumstances during production.



At Resol, all waste is managed in a sustainable and responsible way.

